

# SR 15 SECTION 088 CSV T SOUTHERN SECTION



## COMMUNITY MEETINGS

SEPTEMBER 19 & 26, 2018



Excellence Delivered *As Promised*

## **AGENDA**

- **MEETING PURPOSE**
- **PROJECT UPDATE**
  - **NORTHERN SECTION**
  - **SOUTHERN SECTION**
- **SOUTHERN SECTION ALIGNMENT REVIEW**
- **3D MODEL**
- **NEXT STEPS**
- **GROUP DISCUSSION**
- **1 ON 1 DISCUSSION**

## MEETING PURPOSE

- Provide updates and continue to work through challenges to advance CSVT and ultimately achieve its long-term benefits
  - Further explain the visual aspects of CSVT outside the Ash Basin Focus Area
  - Show how CSVT will look from nearby communities
  - Provide a forum to ask questions and discuss ways to minimize impacts

## **NORTHERN SECTION UPDATE**

- Earthwork and bridges are currently 80% complete overall
  - Paving is anticipated to start in 2019
- Northern Section will be opened to traffic prior to Southern Section
  - Opening is anticipated in 2022



*CSV T Northern Section Construction  
(looking north)*








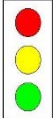
*CSV T River Bridge Construction  
(looking northeast)*

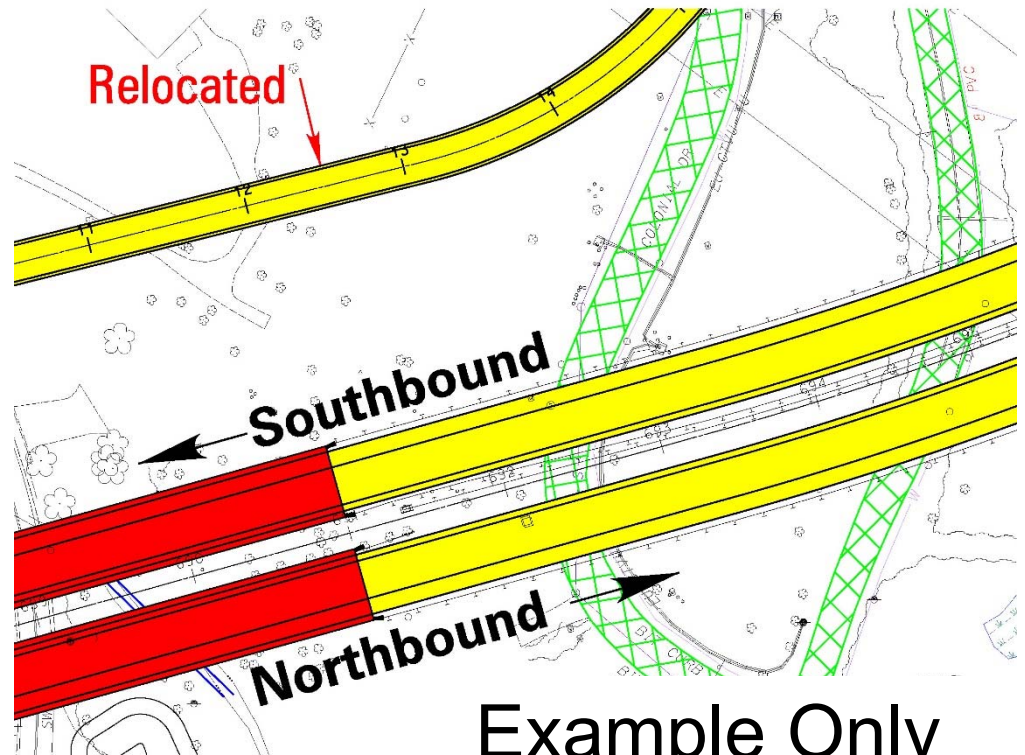
## **SOUTHERN SECTION UPDATE**

- Eastern Alternative presented to public as PennDOT's recommended alternative at November 15, 2017 meeting
  - Currently working to gain environmental clearance from FHWA
  - Providing more information during "next steps" agenda item
  
- Design progressing outside of Ash Basin Focus Area
  
- Stakeholder Coordination
  - UGI – gas line relocation
  - PPL – relocation of transmission lines
  - Penn Valley Airport – approach and air space clearances
  - PADEP – acid rock avoidance / handling / treatment

**REVIEW OF CSVT SOUTHERN SECTION ALIGNMENT**

**LEGEND**

-  EXISTING ROADWAY REMOVAL
-  PROPOSED ROADWAY
-  BRIDGE WORK
-  PROPOSED STRUCTURE
-  PROPOSED SIGNAL
-  EXISTING SIGNAL

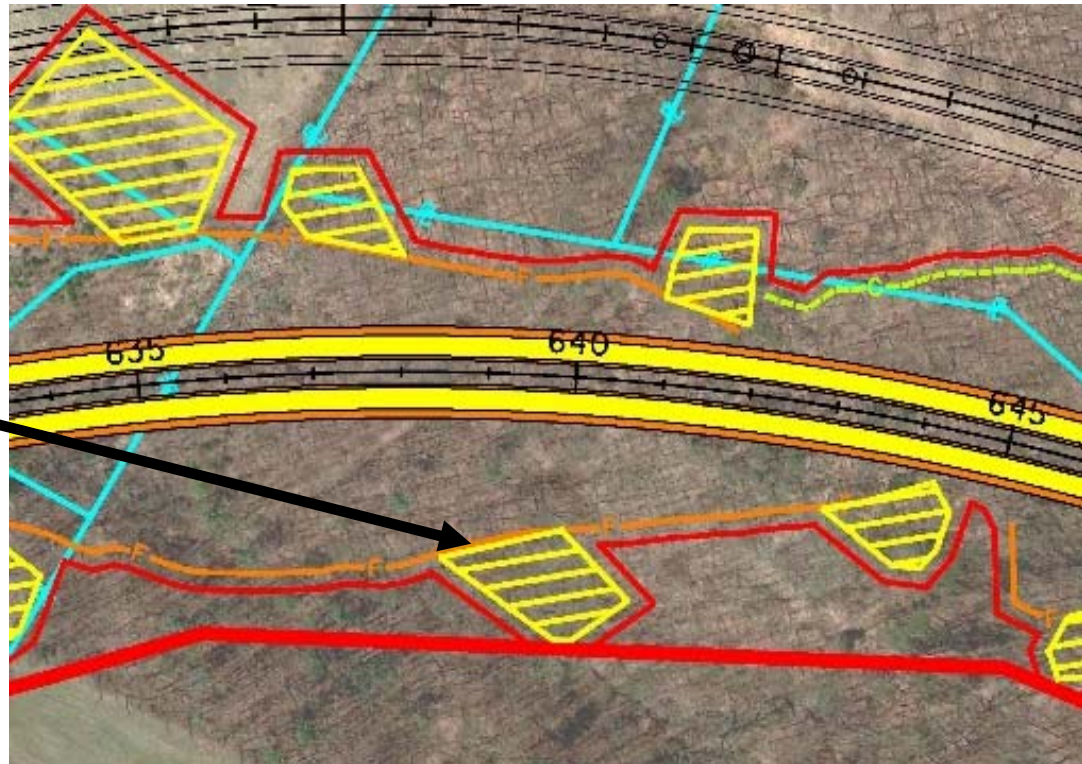


Example Only

**REVIEW OF CSVT SOUTHERN SECTION ALIGNMENT**

**LEGEND REVIEW**  
**CONTINUED**

Proposed Stormwater  
Management Area  
(temporary or permanent)



Example Only

## **3D MODEL**

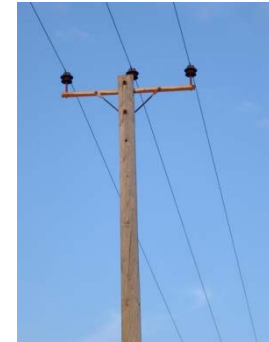
### **NOTES:**

- 1. Accurate but not virtual reality**
- 2. Temporary / permanent stormwater facilities - light green**
- 3. Trees with foliage - computer generated**
- 4. Preliminary noise barriers - tan/orange color**



## NEXT STEPS

- Project Completion
  - Environmental clearance  
(Ash Basin Focus Area)
  - Final design
  - Mitigation
  - Right-of-way acquisition
  - Utility relocations
  - Permitting
  - Construction



## NEXT STEPS

- Environmental Clearance (Ash Basin Focus Area)
  - Project Team prepared an Environmental Assessment
    - Held 30-day public review and comment period
    - Held public hearing in June 2018
  - PennDOT is currently responding to public comments before requesting environmental clearance from the Federal Highway Administration
  - Anticipate clearance later this fall



## NEXT STEPS

- Mitigation
  - Examples
    - Minor design adjustments
    - Slope changes
    - Noise barriers (if warranted)
    - Access adjustments
    - Landscaping
    - Construction restrictions
    - Environmental mitigation



## NEXT STEPS

- Noise Mitigation
  - Preliminary barrier locations are shown on a display in the lobby
  - Next step is a final noise analysis
  - Meetings will be held in the future for communities in which a noise barrier is warranted, feasible, and reasonable
  - Handouts are available in the lobby outlining the process for noise analysis and noise barrier design



## PROJECT SCHEDULE

- Environmental Clearance –  
Anticipated Fall 2018
- Release Estimated Construction Schedule –  
Anticipated Fall 2018
- Project team will continue to work quickly to complete design and advance the project to construction.



## **YOUR FEEDBACK IS IMPORTANT!**

- Ways to provide feedback tonight:
  - Group Discussion
  - 1 on 1 Discussion
  - Questionnaire
    - » Complete tonight
    - » Take home and mail / email



## HOW DO I GET INFORMATION?

- Attend Future Meetings
- Visit Project Web Site – [csvt.com](http://csvt.com)

- Contact PennDOT District 3-0

Matthew Beck, P.E., Assistant Plans Engineer

[matbeck@pa.gov](mailto:matbeck@pa.gov)

570-368-4256



**THANK YOU!!**

*We Really Appreciate Your Time  
and Input !!*



*Excellence Delivered **As Promised***